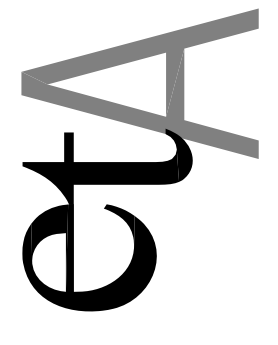


160 b FILLMORE STREET
SAN FRANCISCO, CA



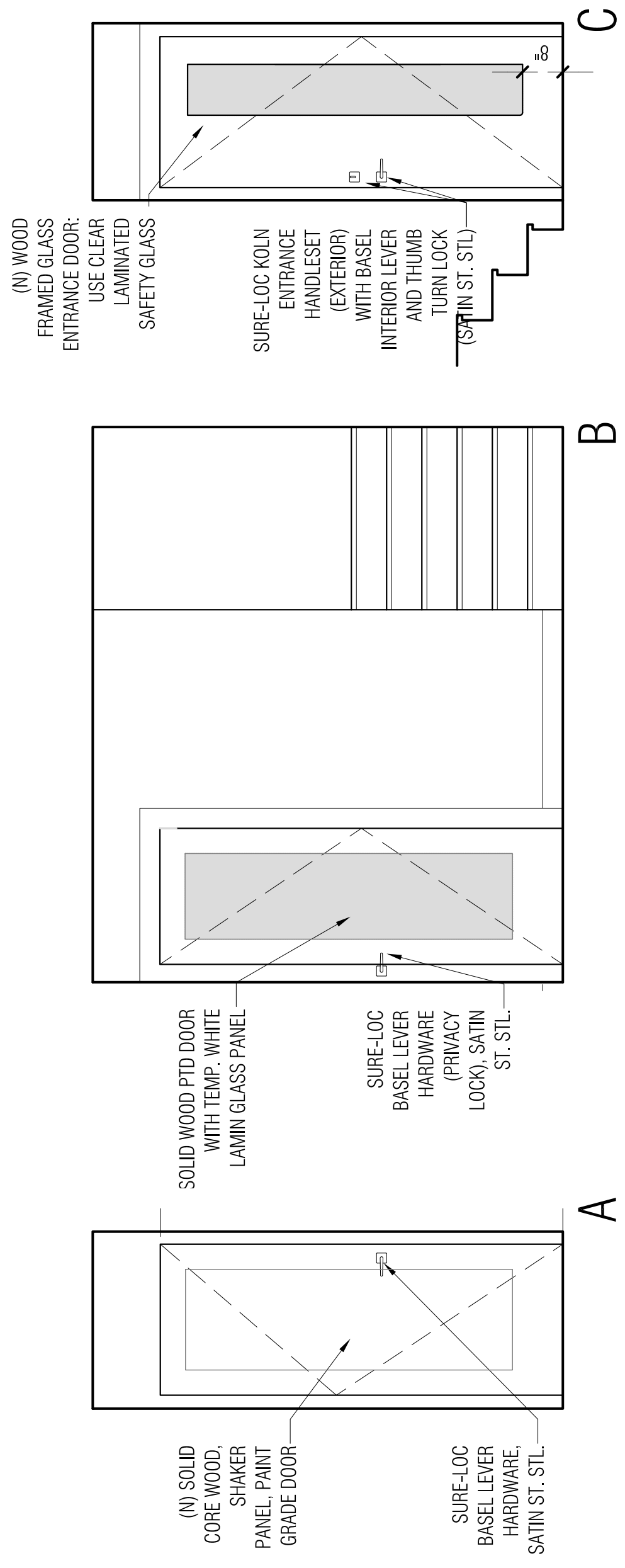
EWALD TAUBAKSH
ARCHITECTURE
1175 FOLSOM STREET
S E C O R D F L O O R
SAN FRANCISCO 94103
P 415.253.0000
F 415.253.0702

- 06.17.10 1. PRELIMINARY PRICING
- 01.24.12 2. REVISIONS
- 02.23.12 3. FINAL PRICING
- 02.27.12 4. REVISIONS TO PRICING SET
- 04.23.14 5. RE-DESIGN FOR PRELIM PRICING
- 08.07.14 6. progress printing
- 10.09.14 7. progress printing
- 10.13.14 8. CONTRACTOR PRICING
- 04.03.15 9. CONTRACTOR PRICING
- 06.04.15 10. BUILDING PERMIT

ELEVATIONS

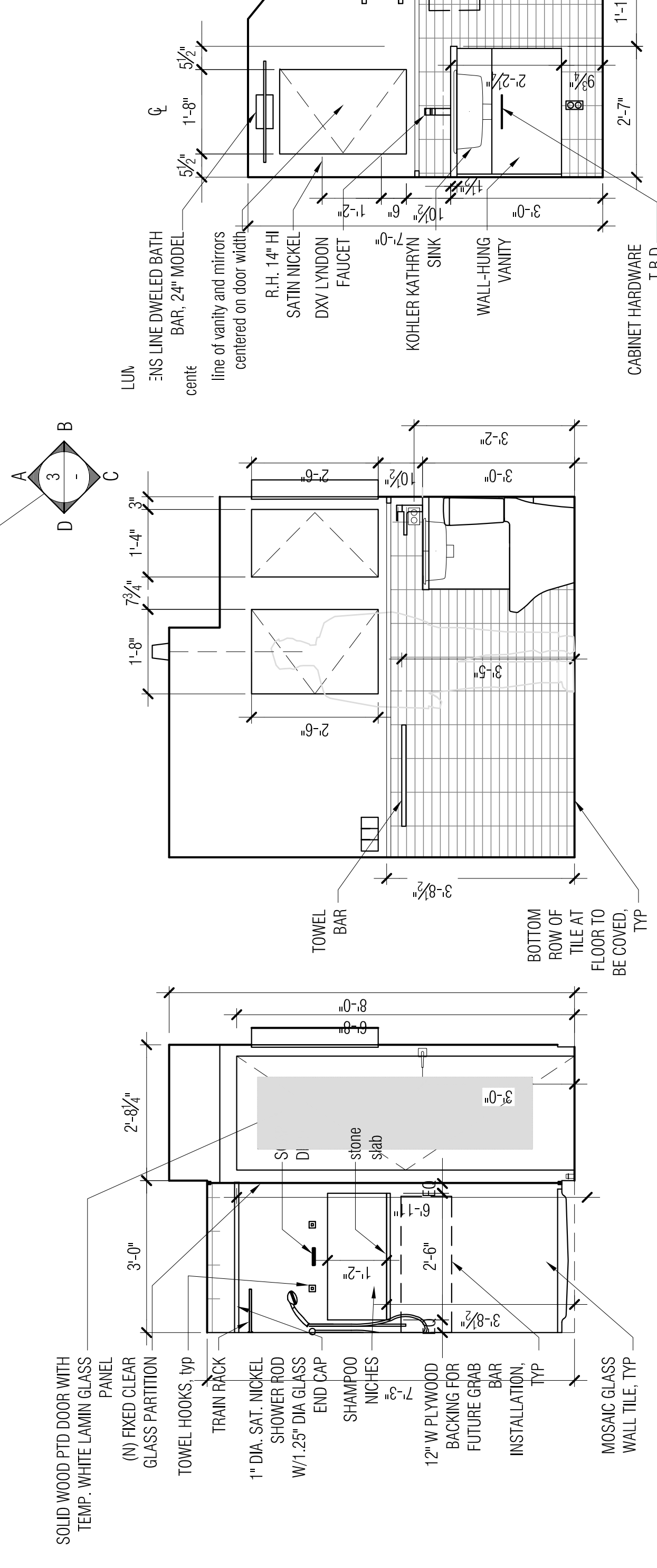
A3.1

2 ELEVATION - HALL

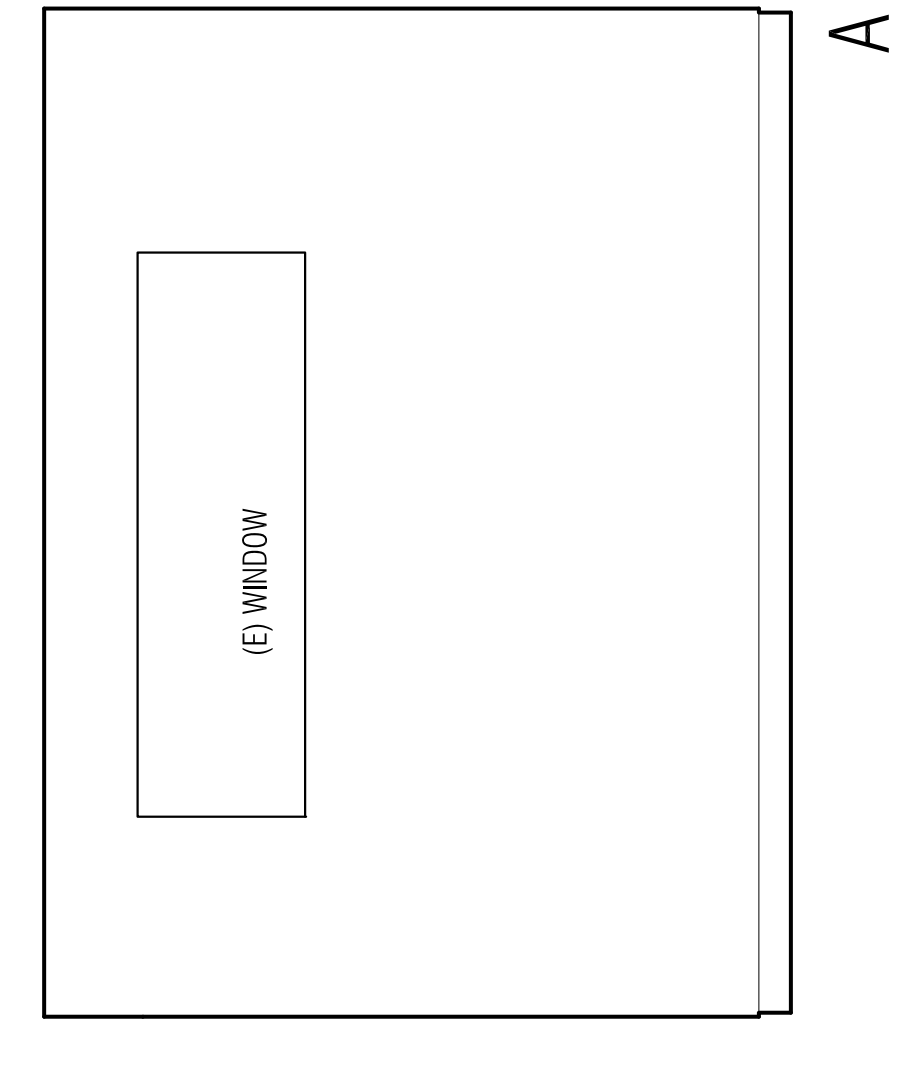


1 PLAN -
1/2" = 1'-0"

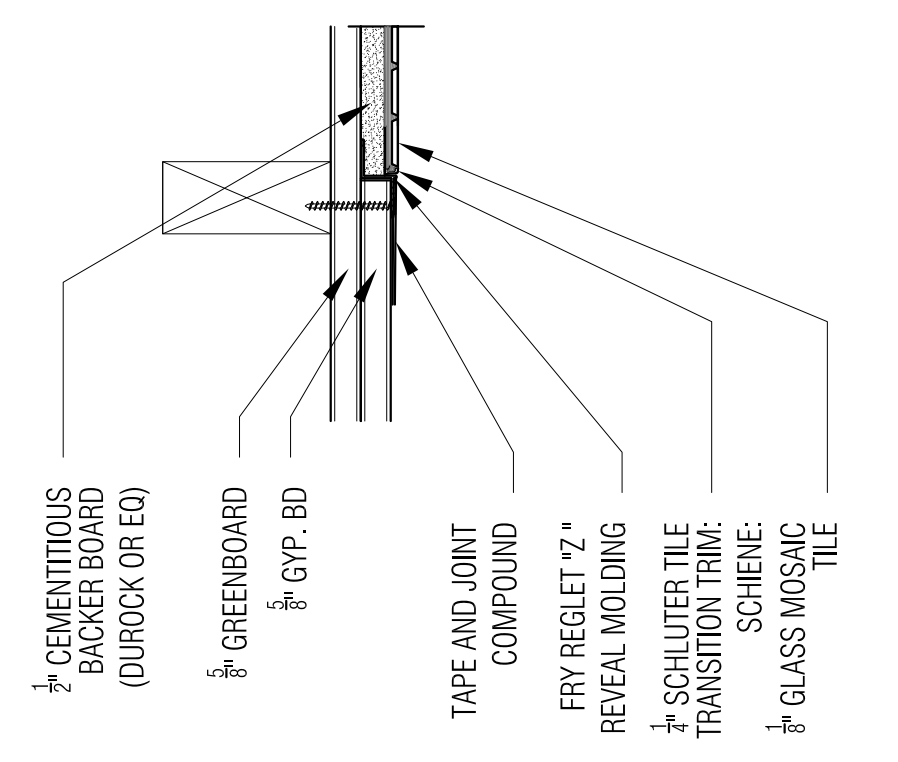
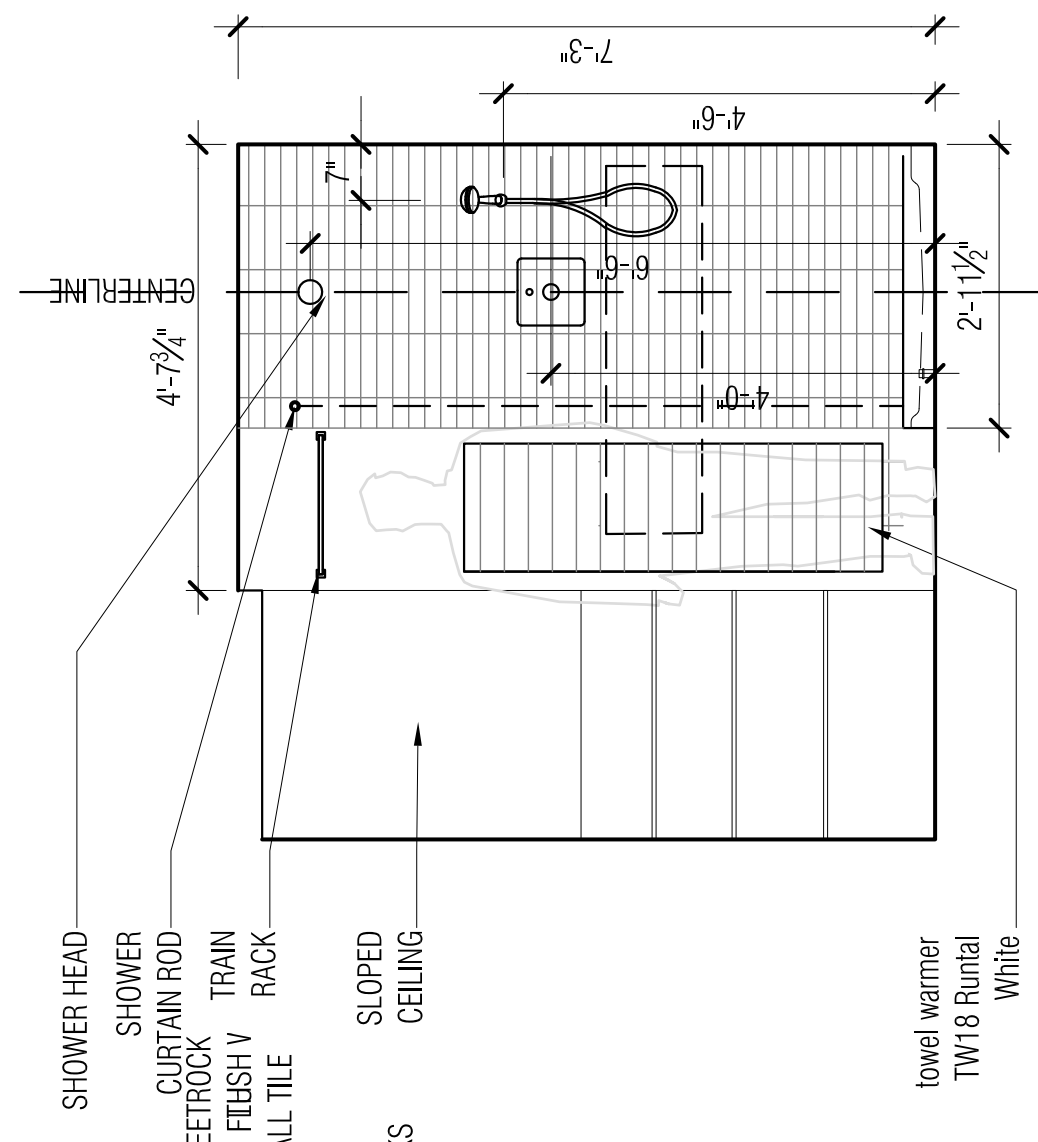
NOTE: PROVIDE ACOUSTICAL INSULATION IN ALL WALLS IN BEDROOM



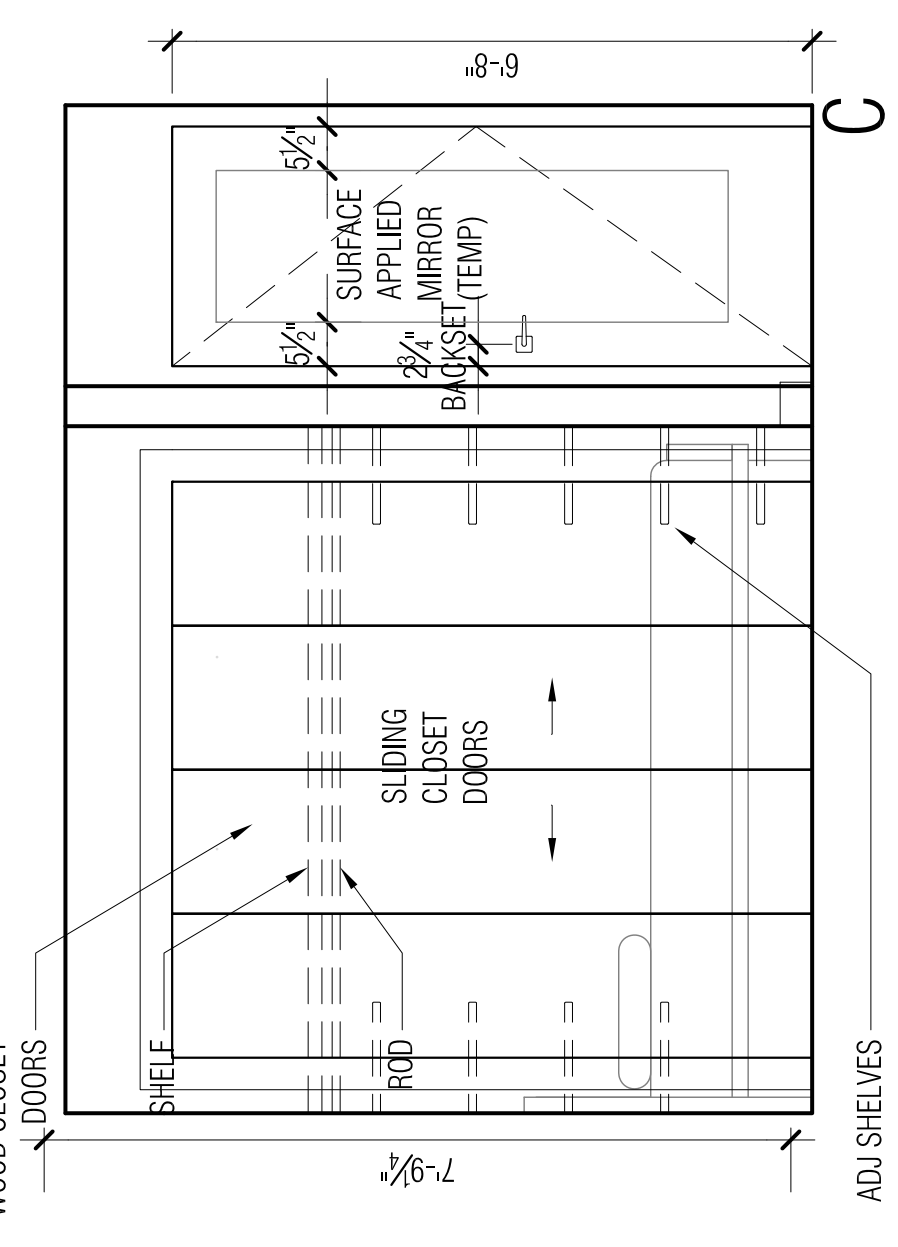
3 ELEVATION - BATHROOM
1/2" = 1'-0"



4 ELEVATION - BEDROOM
1/2" = 1'-0"

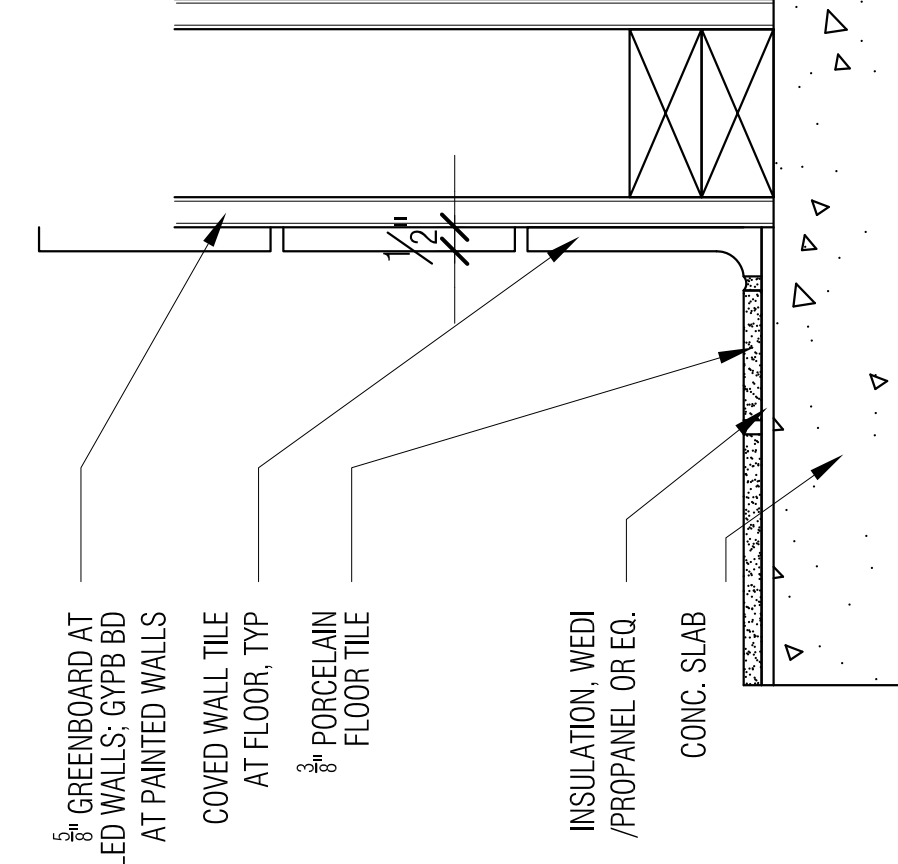


4 ELEVATION - BEDROOM
1/2" = 1'-0"



5 GYP. BD TO WALL TILE

4 ELEVATION - BEDROOM
1/2" = 1'-0"



6 FLOOR TILE AND WALL BASE